

Project Experience

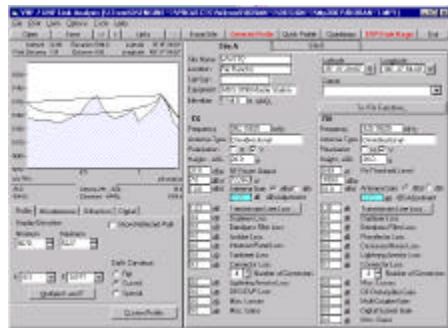
Lift Station Telemetry System Design & Construction Support Services

City of Rio Rancho, Rio Rancho, NM

As a subconsultant to Cinfran/Huitt-Zollars, Inc., Timberline provided engineering services in support of the design of wastewater lift stations for two subdivisions in Rio Rancho, NM. Timberline's support was in the areas of instrumentation, control and 900 MHz radio telemetry, including specifications for PLCs, radios, instruments, programming, and ancillary equipment, followed by construction support services at each station. The work was performed in parallel with a design-build project by CDM/Dallas for Rio Rancho utility system improvements, including a new SCADA system for 16 lift stations. The project called for Modicon PLCs as the RTUs and a SCADA master station located at a new Utility Control Center at Wastewater Treatment Plant #2.



Following the aforementioned project, Timberline was a subconsultant to Wilson and Co. to provide telemetry analysis for another wastewater lift station project. The City of Rio Rancho was concerned that this station, located at Highway 528 and Obregon Road in Rio Rancho, NM, would not have adequate radio coverage due to terrain blockage along the communication path.



MICROPATH 2000™
PLOT OF PATH

Accordingly, they were considering the erection of a tall tower or use of telephone lines. However, based on analysis performed by Timberline, the path meets the standard for acceptable performance for a licensed system. While there is blockage along the path, the path is short and the blockage occurs along the highway right-of-way where there is little likelihood of future buildings/structure along the path that might reduce system performance. By performing this analysis, the City was able to save the cost and potential neighborhood aesthetics concerns associated with a tower and month telephone leased line costs.

Contact: Russ Grayson
CINFRAN/Huitt-Zollars / Albuquerque
(505) 892-5141

Tim McDonough
Wilson & Co. / Albuquerque
(505) 898-8021