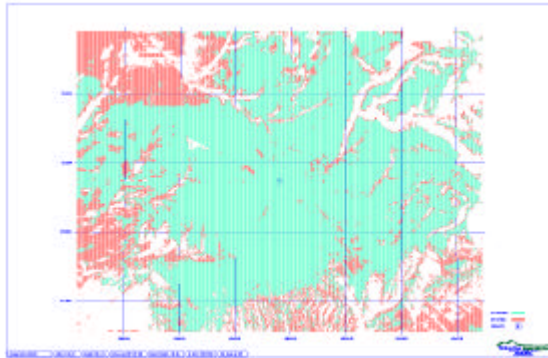


Project Experience

Durango Fire Dispatch Center Communication Study San Juan National Forest, Durango, Colorado

The Durango Fire Dispatch Center recognized a need to be able to readily determine the radio coverage of their existing dispatch radio system. This information is critical to the effectiveness of fire-fighting efforts in the region and the safety of personnel that are called upon to fight these fires. Based on communication expertise, the Center selected Timberline to perform the desired analysis. In this effort, Timberline performed computer analysis of the radio



SAMPLE AREA COVERAGE PLOT

coverage provided by the existing dispatch radio system, which consisted of four base stations and 11 repeaters. For each of the base station and repeater locations, Timberline prepared scaled plots that showed the predicted area coverage. These plots were made on clear, durable Mylar film that can be overlaid on existing maps and utilized in the Dispatch Center for advance planning purpose or taken to the field during actual operations. The coverage plots were created using different colors to show the anticipated performance for both handheld and mobile radios.

Contact: *John Nolan, Telecommunication Specialist
San Juan National Forest / Durango Fire Dispatch
Durango, CO
(970) 385-1268*

*Chris Buckman / Dispatch Manager
San Juan National Forest / Durango Fire Dispatch
Durango, CO
(970) 385-1335*